



3U P47 PCIe Power Supply Backplane

3U x8HP power supply backplane with single P47 power connector.

PN: OSS-CPCIe-3U-PSBP-P47-1

Features

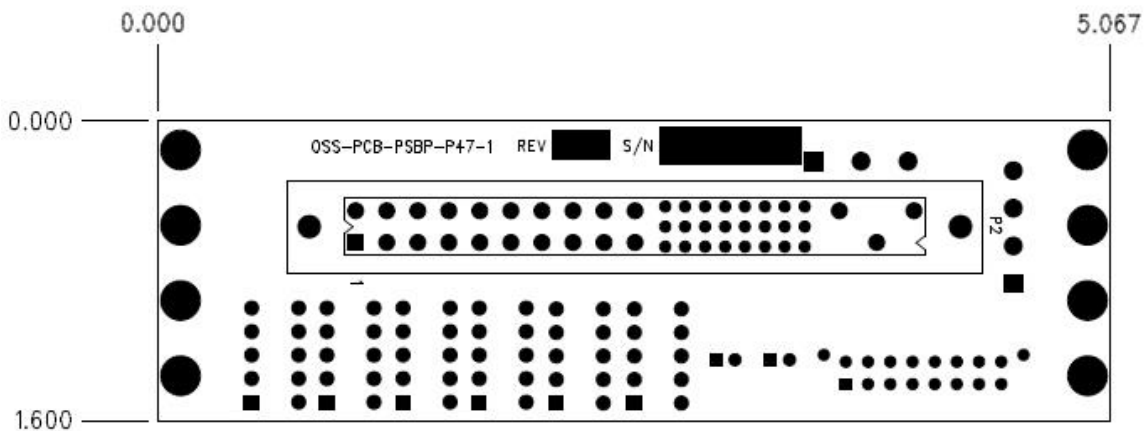
- Single P47 power connector
- 3-pin AC input connector
- Output power bugs mate with OSS Power Bar
- 16-pin utility connector and peripheral power connector for current sharing, sense-lines and IPMI Signals
- On/Off switch connection
- 2-slots wide



Specifications

Dimensions	1.6 inches wide x 5.067 inches high
Power Input	AMP 3-pin 350429-1
Power Supply Connector	Positronic PCIH47F300A1/AA
Power Supply Outputs	3.3, 5, 12, -12 and GND
Peripheral Power Connector	AMP 4-pin 770997-1

Dimensional Drawing



Specifications subject to change without notice

