

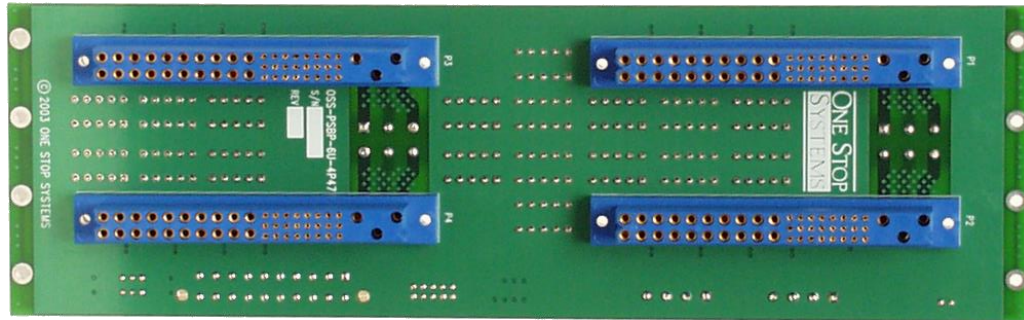
# 6U Quad P47 CPCI Power Supply Backplane

6U x 16HP power supply backplane with four P47 power connectors.

PN: OSS-CPCI-6U-PSBP-4P47

## Features

- 4 P47 connectors
- Power bugs for +5V, +3.3V, 12V, -12V and ground
- 6U x 16HP-wide
- -ATX version with ATX power connector
- Peripheral power connectors on rear



## Specifications

|                            |                                        |
|----------------------------|----------------------------------------|
| Dimensions                 | 3.150 inches wide x 10.317 inches high |
| Power Input                | AMP 2x3-pin 350431-1                   |
| Power Supply Connectors    | Positronic PCIH47F300A1/AA             |
| Power Supply Outputs       | 3.3, 5, 12, -12 and GND                |
| Peripheral Power Connector | AMP 4-pin 770997-1                     |

## Dimensional Drawing

