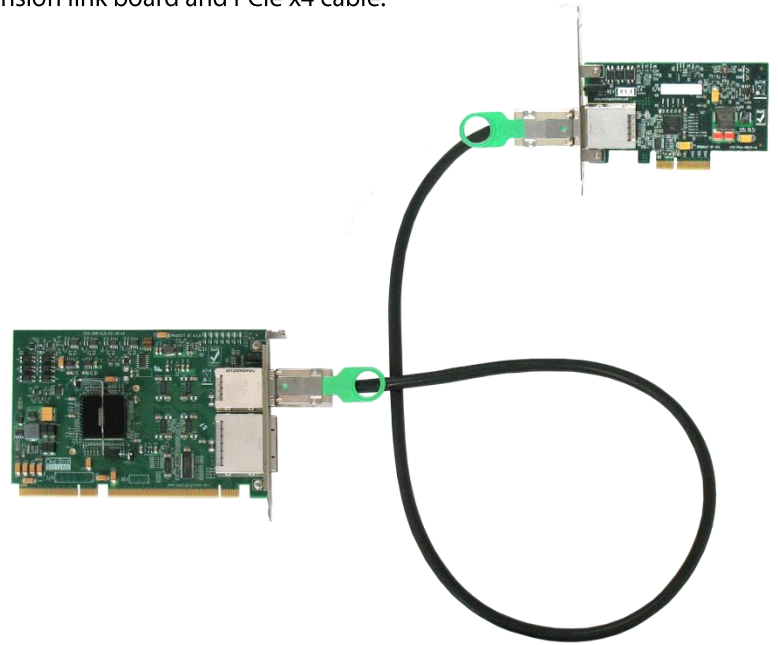


# PCIe x4 Gen 2 Host to ELB Kit

Host cable adapter, expansion link board and PCIe x4 cable.

PN: OSS-KIT-EXP-1500



## Features

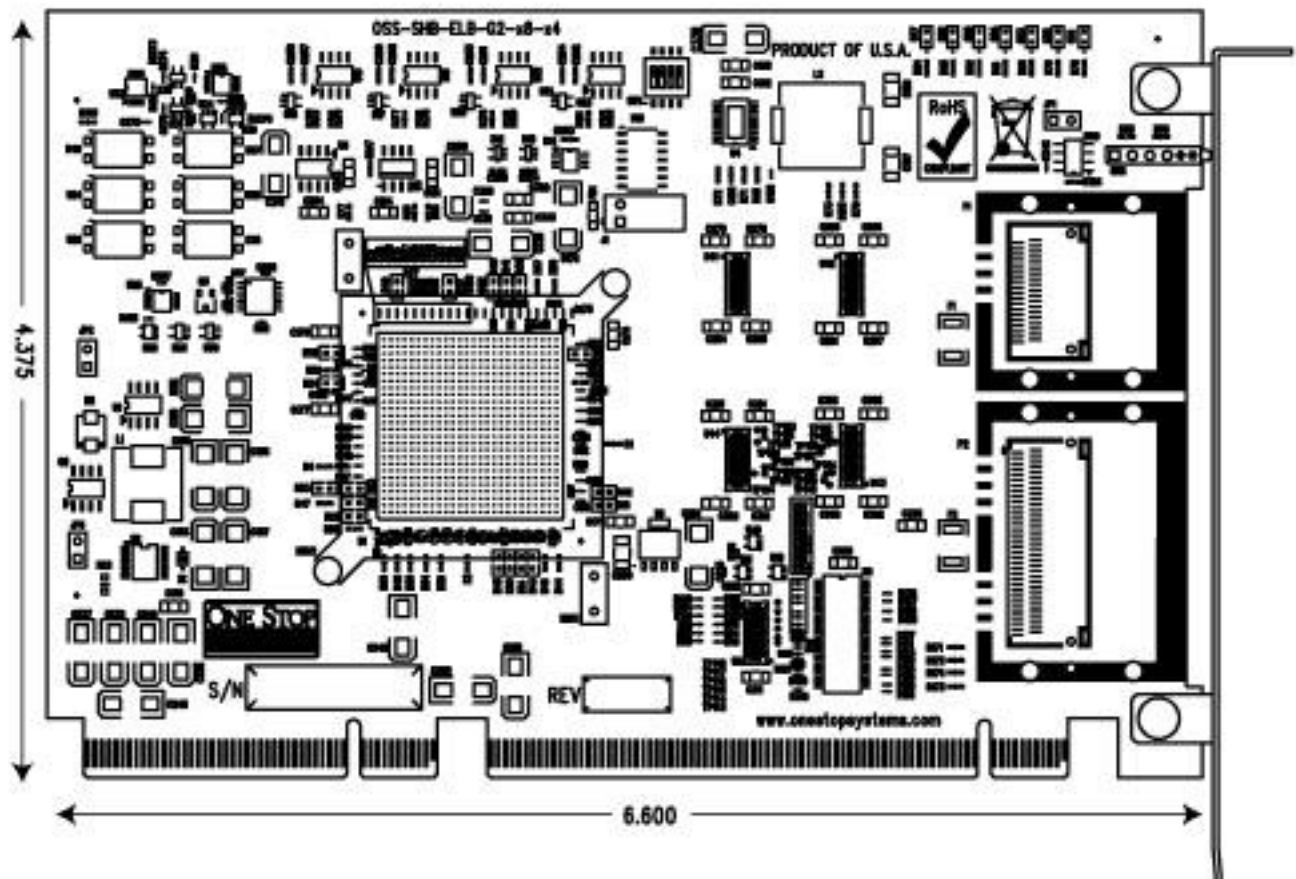
- The host adapter card inserts into any PCI Express x16 slot on the host motherboard. The high speed cable allows data transfers to and from the host at 20Gb/s.
- The target cable adapter fits into the endpoint slot on the two slot backplane seamlessly connecting a downstream I/O device to the host computer without software.
- The two slot backplane can be installed into any downstream chassis or used for testing purposes

## Specifications

| PCIe x4 Host Cable Adapter    |   |
|-------------------------------|---|
| Form Factor:                  | x4 PCIe add-in card   |
| Dimensions (H x L):           | 2.713 x 4.530 " (69 x 112mm)  |
| Front Panel Connectors:       | One PCIe x4 cable connector   |
| Front Panel Indicators:       | Power On / Cable Present LEDs   |
| Re-driver:                    | Pericom PI2EQX5804  |
| Temperature Range:            | 0° to 50°C (32° to 122°F)   |
| Relative Humidity:            | 10 to 90% non-condensing  |
| Shock:                        | 30g acceleration peak (11ms pulse)                                      |
| Vibration:                    | 5-17 Hz 0.5" double amplitude displacement; 7-2000Hz, 1.5g acceleration |
| Power Consumption:            | 3.75W typical, 3.3@1.3A   |
| Agency Compliance:            | FCC Class B<br>CE<br>RoHS   |
| PCIe Gen 2 two-slot backplane |   |
| Dimension (H x L):            | 2.2 x 4.5"  |
| Power:                        | ATX power supply  |
| Form Factor:                  | 2 PCIe x16 slots  |

| <b>PCIe x4/x8 Gen 2 Expansion Link Board</b> |   |
|--|---|
| Form Factor:                                 | PICMG 1.3 SHB Express system slot compliant   |
| Slot Type:                                   | System slot for the expansion chassis   |
| Dimension (H x L):                           | 4.375 x 6.6 in (111 x 161 mm)   |
| Switch:                                      | PLX PEX8632 32 lane switch  |
| Upstream Interface:                          | PCIe x4 over cable, PCIe x8 over cable  |
| Downstream Interface:                        | 20 lanes of PCI Express can be auto-configured as:<br>One x16 and one x4 PCIe links, Two x8 and one x4 PCIe Links, Five x4 PCIe links   |
| Front Panel Connectors:                      | 1 PCIe x4 cable connector, 1 PCIe x8 cable connector  |
| Front Panel Indicators:                      | 1 green LED for x4, 1 green LED for x8  |
| Internal Indicators:                         | Power In-range Indicators for +12V,+3.3V & VTT (Red/Green), Power on indicator for +1V (Green)<br>Bank of 5 board status indicators (Red)   |
| Optional Features:                           | Switch Control: 3 banks of DIP switches for PEX8632 Configuration, Switch Debug Port: Internal JTAG communications header, Heat Sink: On-board fan header provided for optional heat sink fan |
| Temperature:                                 | 0° to 70°C (32° to 158°F)   |
| Storage Temperature:                         | -40° to 85°C (-40° to 185°F)  |
| Humidity:                                    | 10 to 90% non-condensing (operating), 5 to 95% non-condensing (storage)   |
| Shock:                                       | 30g acceleration peak (11ms pulse)  |
| Vibration:                                   | 5-17 Hz 0.5" double amplitude displacement; 7-2000Hz,1.5g acceleration  |
| Power Consumption:                           | 9W typical, 11.4W max<br>+12V @ 0.675A max, 3.3V @ 1.0A, Max, 5V aux @ 2.5mAmax   |
| Agency                                       | FCC Class B, CE, RoHS   |

## Dimensional Drawings



Specifications subject to change without notice

