

# PCIe x8 Gen 2 Cable Adapter to ELB Kit

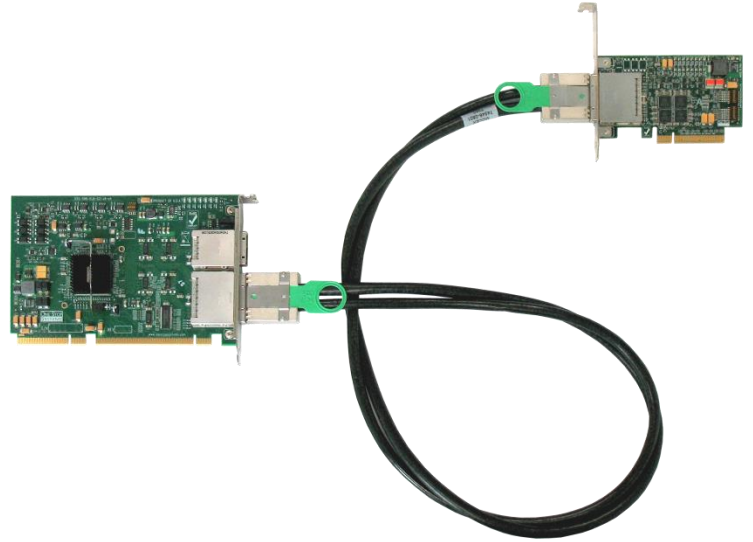
## Server to PCIe backplane

PCIe x8 Gen 2 expansion kit with PCIe x8 Gen 2 host cable adapter, PCIe x8 Gen 2 expansion link board, and PCIe x8 2M cable.

PN: OSS-KIT-EXP-7500

### Features

- The Gen 2 host adapter card inserts into any PCI Express x8, or x16 slot on the host motherboard. The high speed cable allows data transfers to and from the host at 40Gb/s.
- The PCIe x4/x8 expansion link board installs in the system host slot of a PCIe backplane seamlessly connecting a downstream I/O device to the host computer without software.

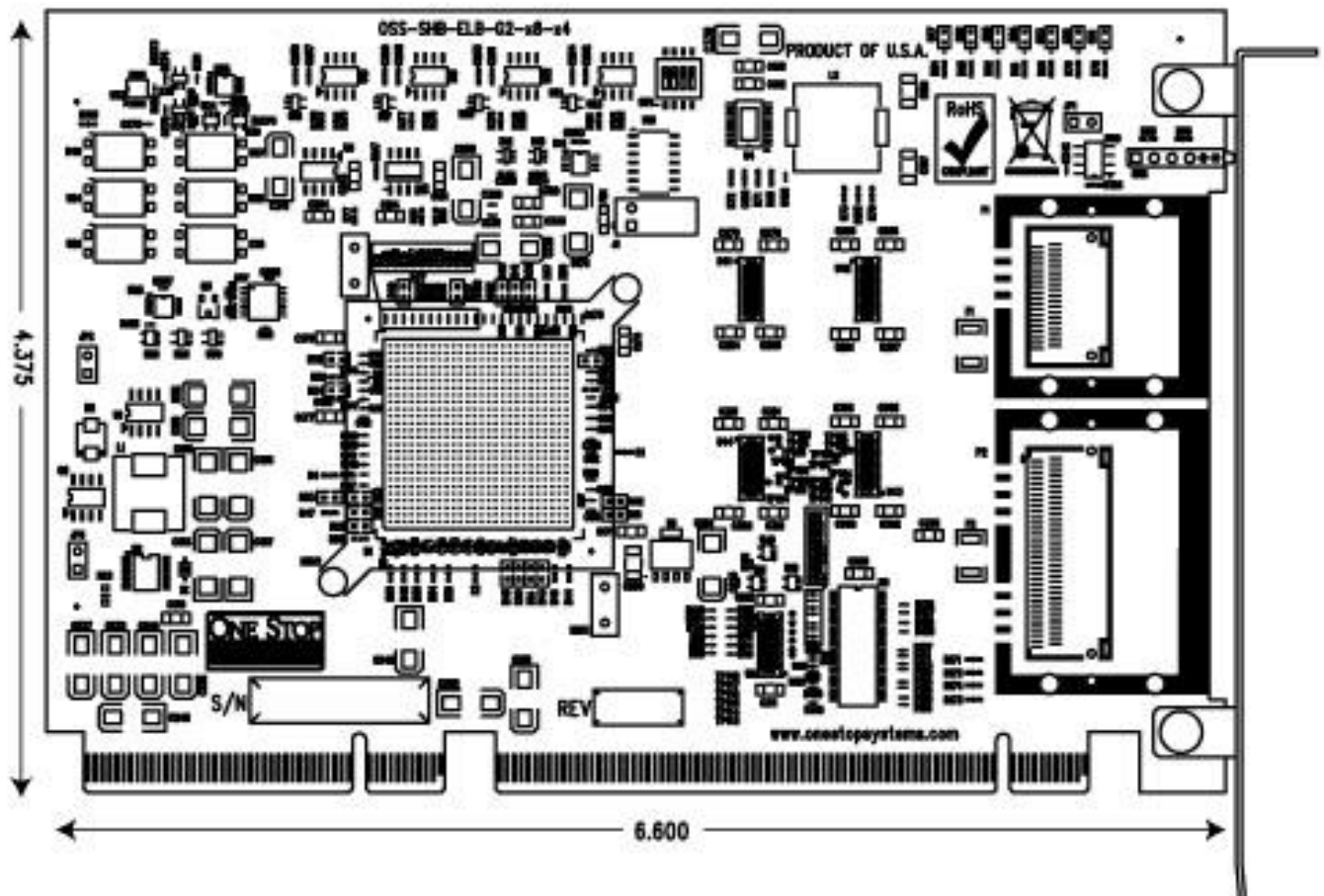


## Specifications

PCIe x8 Gen 2 Host Cable Adapter	
Form Factor:	PCIe half-card
Operating Temperature:	0°C to +70°C environment
Storage Temperature:	-40°C to 85°C
Operating Humidity:	10% to 90% relative humidity non-condensing
Storage Humidity:	5% to 95% relative humidity non-condensing
Power:	3.3V
Connectors:	PCIe x8 cable connector PCIe x8 edge connector
Industry Specifications:	PCIe External Cabling Specification, Rev. 1.0 PCI Express™ Card Electromechanical Specification, Rev. 2.0 PCI Express® Base Specification, Rev. 2.0 ATX Specification, Version 2.2
Re-drivers:	5.0 Gbps 4-Lane PCI Express Gen 2 Re-Driver with Equalization & Emphasis Pericom Part number PI2EQX5804
Bracket:	HIB2 x8 add-in card bracket Standard and low profile brackets available No LEDs on bracket
Agency Compliance:	FCC Class B, CE, RoHS

<b>PCIe x4/x8 Gen 2 Expansion Link Board</b>	
Form Factor:	PICMG 1.3 SHB Express system slot compliant
Slot Type:	System slot for the expansion chassis
Dimensions (H x L):	4.375 x 6.6 in (111 x 161 mm) 1 slot wide
Switch:	PLX PEX8632 32 lane switch
Upstream Interface:	PCIe x4 over cable, PCIe x8 over cable
Downstream Interface:	20 lanes of PCI Express can be auto-configured as: One x16 and one x4 PCIe links, Two x8 and one x4 PCIe links, Five x4 PCIe links
Front Panel Connectors:	1 PCIe x4 cable connector, 1 PCIe x8 cable connector
Front Panel Indicators:	1 green LED for x4, 1 green LED for x8
Internal Indicators:	Power In-range Indicators for +12V, +3.3V & VTT (Red/Green) Power on indicator for +1V (Green). Bank of 5 board status indicators (Red)
Optional Features Switch Control:	3 banks of DIP switches for PEX8632 configuration
Switch Debug Port:	Internal JTAG communications header
Heat Sink:	On-board fan header provided for optional heat sink fan
Operating Temperature:	0° to 70°C (32° to 158°F)
Storage Temperature:	-40° to 85°C (-40° to 185°F)
Operating Humidity:	10 to 90% non-condensing
Storage Humidity:	5 to 95% non-condensing
Shock:	30g acceleration peak (11ms pulse)
Vibration:	5-17 Hz 0.5" double amplitude displacement; 7-2000Hz, 1.5g acceleration
Power Consumption:	9W typical, 11.4W max +12V @ 0.675A max, 3.3V @ 1.0A Max, 5V aux @ 2.5mA max
Agency Compliance:	FCC Class B, CE, RoHS

### Dimensional Drawings



Specifications subject to change without notice

