

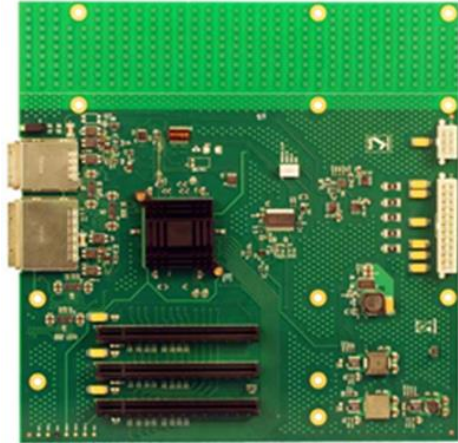
PCIe MicroATX Backplane (2018)

Micro ATX expansion backplane with (3) x8 PCIe slots, x4 and x8 PCIe cable connectors, (1) ATX power connector, (1) ATXe power connector

PN: OSS-PCIe-μATX-BP-2018

Features

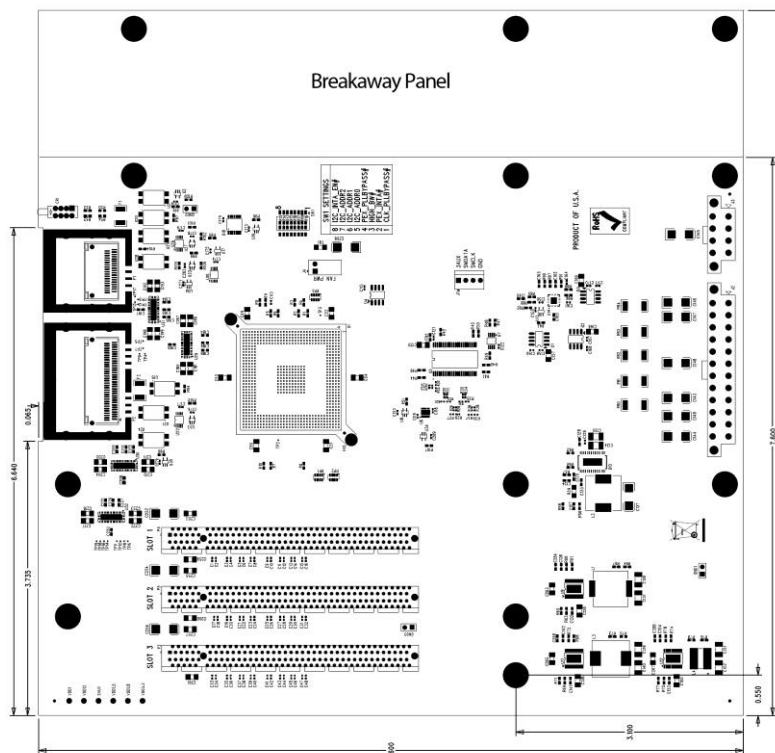
- MicroATX-form factor
- Provides dual PCIe cable inputs in x4 or x8
- PEX8533 provides three x8 downstream links to three PCIe on-board x16 slots
- Can be resized in small form factor



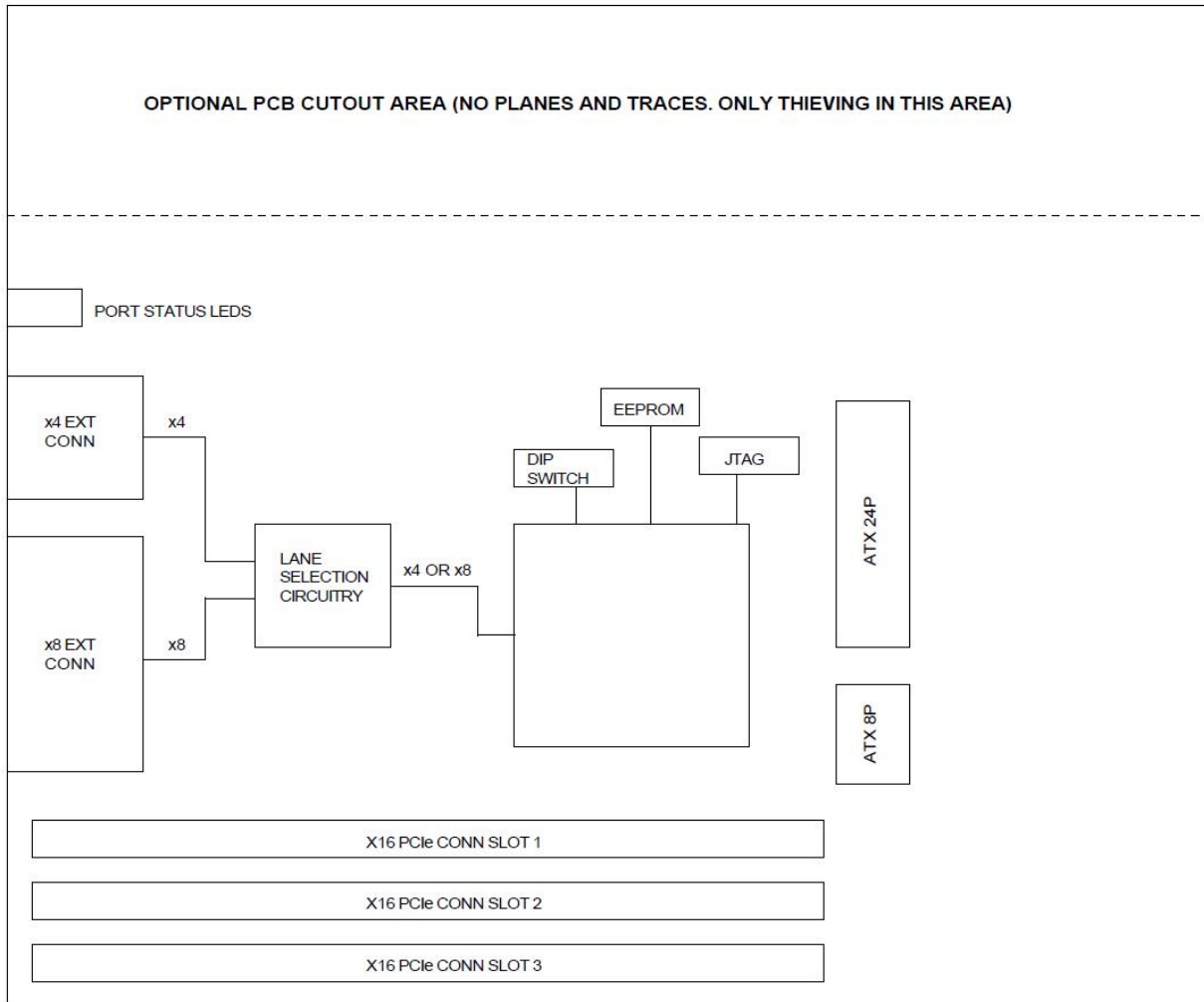
Specifications

| | |
|------------------------------|---|
| Dimensions: | 9.6" W x 9.6 H" |
| Power: | 24-pin mini ATX connector (Molex PN 39-29-9242) 8-pin mini ATX connector (Molex PN 39-29-9082) |
| On-board Regulated Voltages: | 1V, 1.5V, 1.8V, 3.3AUX |
| Front Panel LEDs: | Port status indicates stable x4 or x8 links: 1 upstream, 3 downstream |
| PCIe Switch: | PLX PEX8533 |
| Cable Connectors: | PCIe x8 |

Dimensional Drawing



Block Diagram



Connector Pin-Outs

| Connector | Definition |
|-----------|----------------|
| J1 | I2C Interface |
| J2, J3 | ATX Connectors |

J1 – I2C Interface Connector (Molex P/N: 22-23-2041)

| Pin | Definition |
|-----|-------------|
| 1 | VDDAUX_3.3V |
| 2 | SMDAT |
| 3 | SMCLK |
| 4 | GND |

J3 – ATX Connector (Molex P/N: 39-29-9082)

| Pin | Definition | Pin | Definition |
|-----|------------|-----|------------|
| 1 | GND | 5 | +12V |
| 2 | GND | 6 | +12V |
| 3 | GND | 7 | +12V |
| 4 | GND | 8 | +12V |

J2 – ATX Connector (Molex P/N: 39-29-9242)

| Pin | Definition | Pin | Definition |
|-----|------------|-----|------------|
| 1 | +3.3V | 13 | +3.3V |
| 2 | +3.3V | 14 | -12V |
| 3 | GND | 15 | GND |
| 4 | +5V | 16 | PS_ON# |
| 5 | GND | 17 | GND |
| 6 | +5V | 18 | GND |
| 7 | GND | 19 | GND |
| 8 | PWRON | 20 | NC |
| 9 | +5VSB | 21 | +5V |
| 10 | +12V1 | 22 | +5V |
| 11 | +12V1 | 23 | +5V |
| 12 | +3.3V | 24 | GND |