

PCIe 3.0 to NVMe Adapter

Low profile, single-width, PCIe 3.0 x4 to NVMe adapter installs in a standard PCIe slot and supports a single 2.5" NVMe SSD with SFF-8639 connector.

PN: OSS-PCIe-ADPT-x4-NVMe

Features

- Low profile adapter installs in a standard single-width PCIe Slot
- Supports 1 NVMe 2.5" SSD with SFF-8639 connector
- On board voltage monitoring capability
- Power on/off switching manually or by using software controlled through I2C module



Specifications

Form factor	PCIe low profile, single-width
Dimensions:	6.525" L x 3.873" H
Connectors	PCIe x4 edge connector SFF-8639 connector
Operating Temperature	0°C to +50°C
Storage temperature	-40°C to +85°C
Operating Humidity	10% to 90% relative humidity non-condensing
Storage Humidity	5% to 95% relative humidity non-condensing
PCB	PCIe add-in card standard Thickness .063 +/- .0008"
Bracket	Standard full height
LED's	Activity indicator Power on Manual power on/off button
Agency Compliance	Designed to meet: FCC Class A CE ROHS

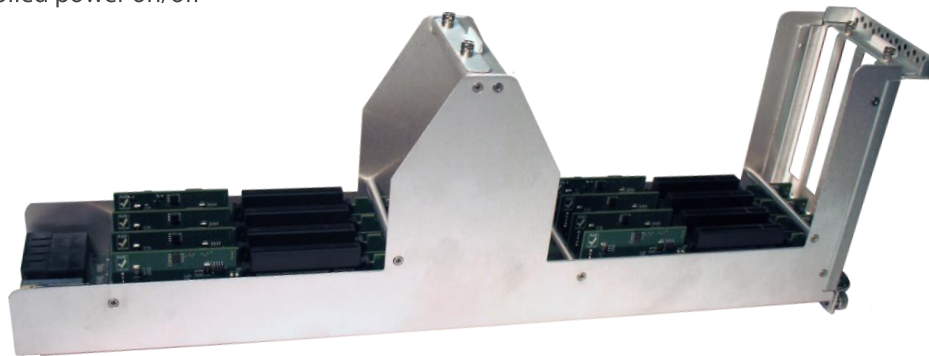
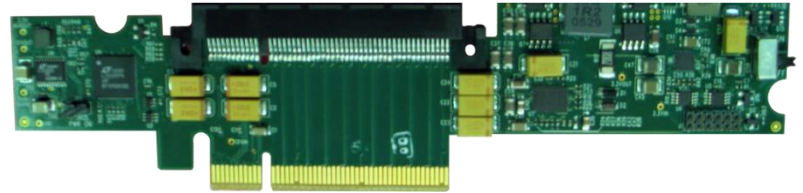
PCIe Riser

Single-width, PCIe x8 passive riser/slot saver installs in a standard PCIe slot and supports a single x1, x4, or x8 add-in card.

PN: OSS-PCIe-RISER-x8

Features

- PCIe x8 card edge/PCIe slot
- Passive
- On board voltage monitoring
- Voltage margining +/- 18%
- Manual or software controlled power on/off switch



Specifications

Form factor	Half length
Dimensions:	6.50" L x 1.75" H
Connectors	PCIe x8 edge connector PCIe x8 slot
Operating Temperature	0°C to +50°C
Storage temperature	-40°C to +85°C
Operating Humidity	10% to 90% relative humidity non-condensing
Storage Humidity	5% to 95% relative humidity non-condensing
PCB	PCIe add-in card standard Thickness .063 +/- .0008"
Bracket	Standard full height
LED's	Activity indicator Power on Manual power on/off button
Agency Compliance	Designed to meet: FCC Class A CE ROHS